



## Q4 - 2018

In the final quarter of 2018, OBRC and BottleDrop concluded the first year of the expanded bottle deposit and return program and reached several milestones: BottleDrop accounts grew by 50% to a total of over 300,000 account holders; BottleDrop added a new redemption center, it's first on the Oregon Coast, in Newport; and BottleDrop continued adding Express locations, for a total of 45 BottleDrop locations statewide.

The fourth quarter of 2018 was important for OBRC's stewardship programs. BottleDrop Refill, created in partnership with O-I, won the 2018 Glass Packaging Institutes' Clear Choice Award in the Sustainability category. At the end of 2018, nearly 250,000 Refill Bottles representing 13 different beverage products were in circulation. BottleDrop Give reached a major milestone by generating over \$1 million raised for Oregon nonprofits since the program began in 2015.



## Quarterly REPORT



## OBRC Facts

*Redeemables: Aluminum, Glass, Plastic*

Containers Processed ~1.35B (2017)

Redemption Centers 25

Reverse Vending Machines 274

BottleDrop Express Sites 20

Retail Drop Sites Served 2242

Reverse Vending Machines 434

Employees in Oregon 453

Members & Participants 160

Processing Plants 5

Portland, Eugene, Hermiston,  
Medford, Redmond

Annual Operating Budget ~\$34M

OBRC is a not-for profit that does not receive funding from the State of Oregon and uses ZERO (\$0) Oregon taxpayer dollars.



## Quarterly REPORT

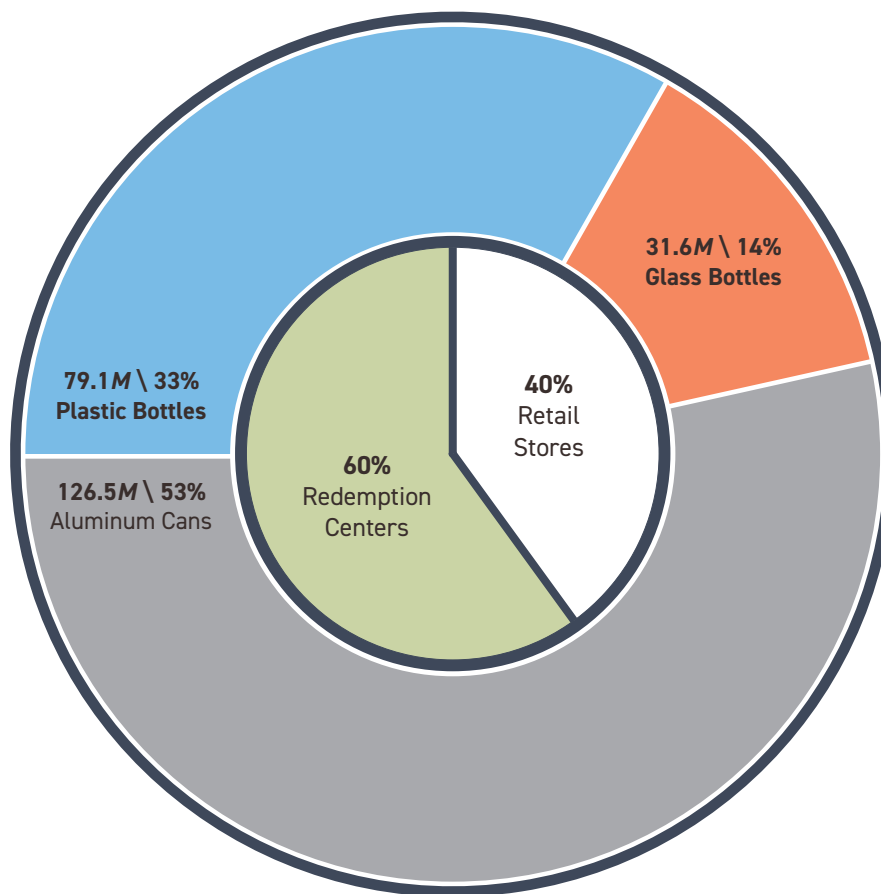


### Return Volume by Container Type (Q4) + Return Location (2017)

#### BottleDrop Center Returns

Containers Redeemed Q4	237.1M
Redeemed per Hour Open	263,450
Redeemed per Day	2.6M
Redeemed per Resident Q4	56

**In Q4 2018, 56 containers were returned per Oregon resident.**

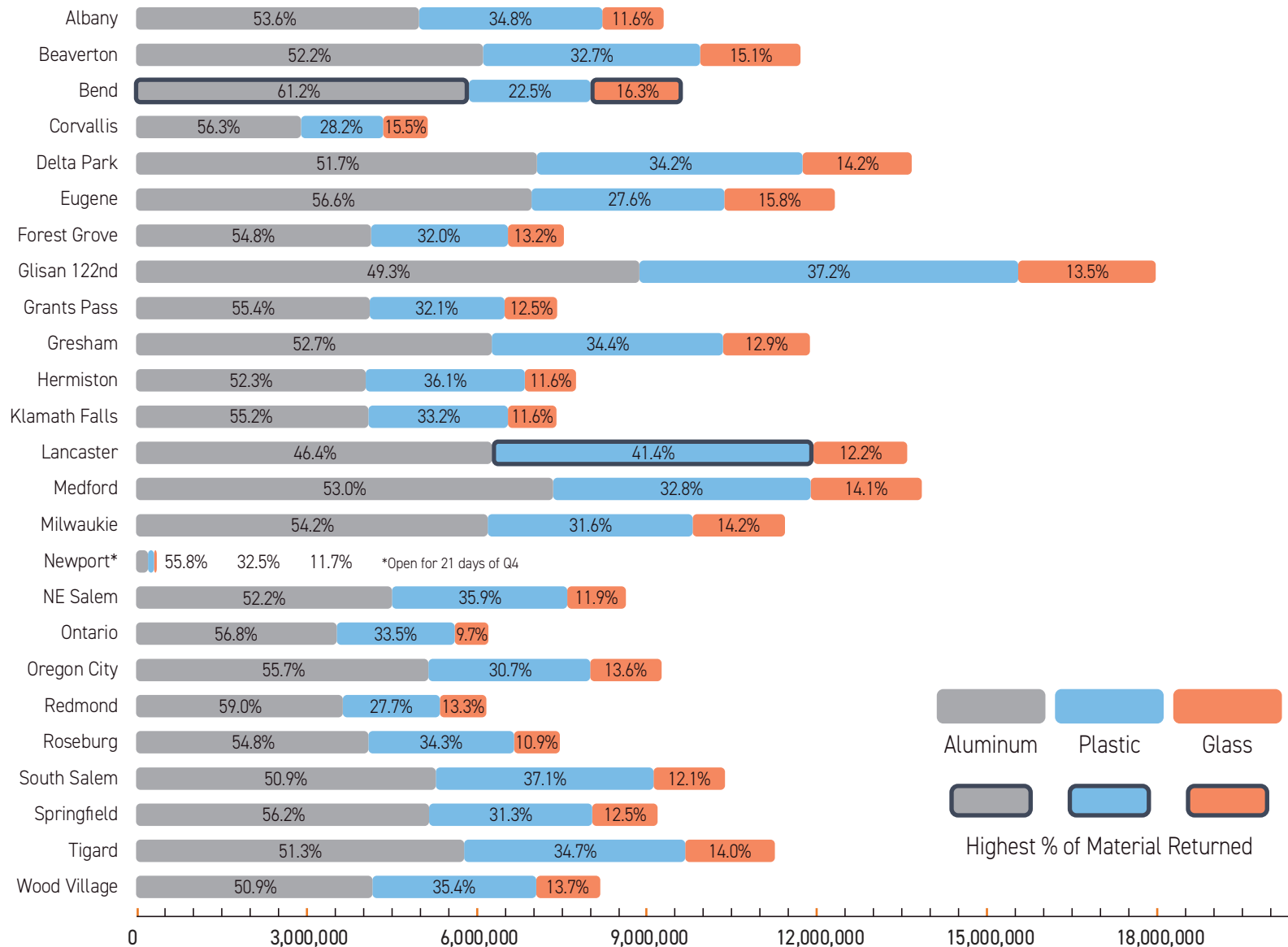




# Quarterly REPORT



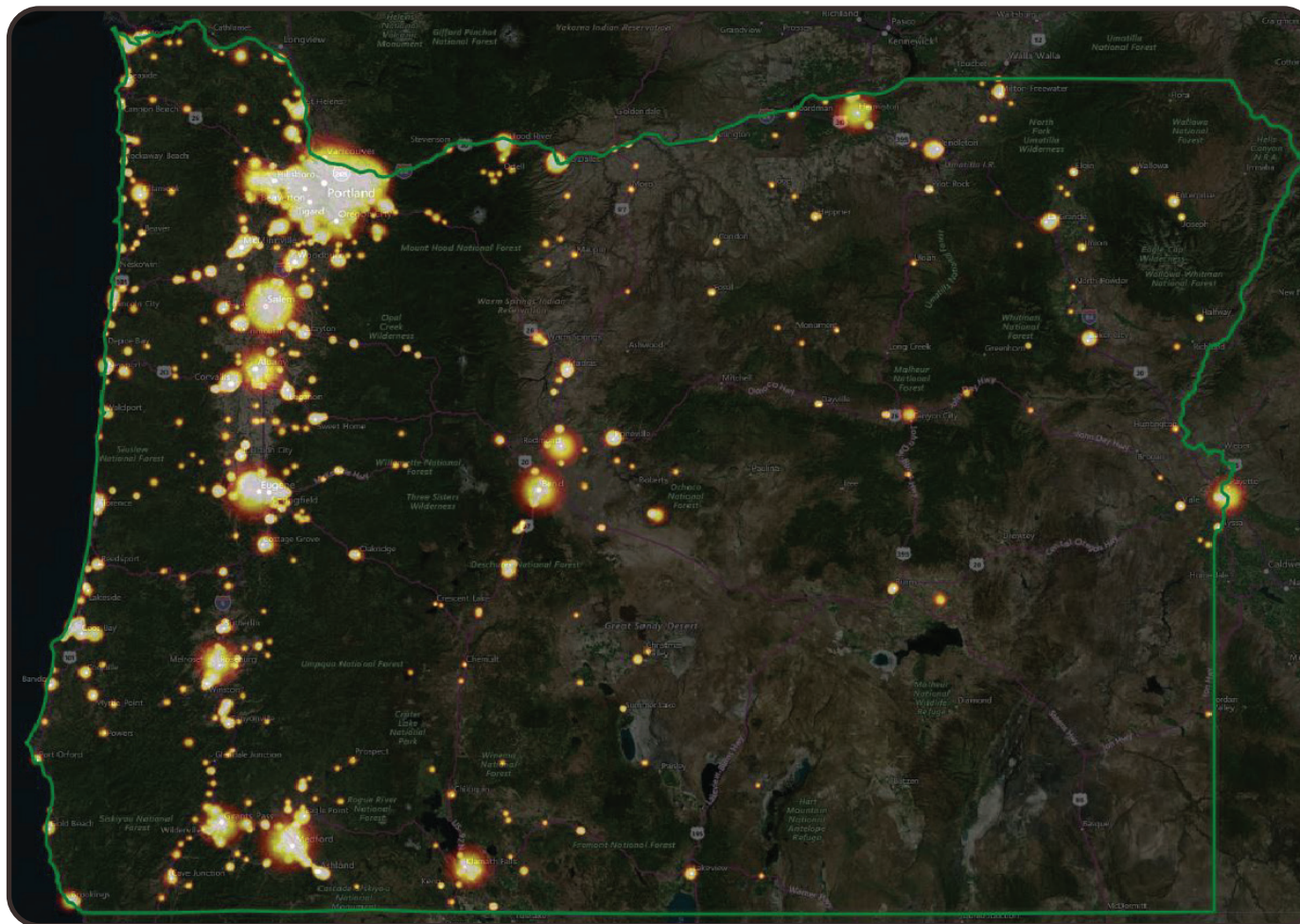
## Return Volume by Redemption Center + Material







# Quarterly REPORT



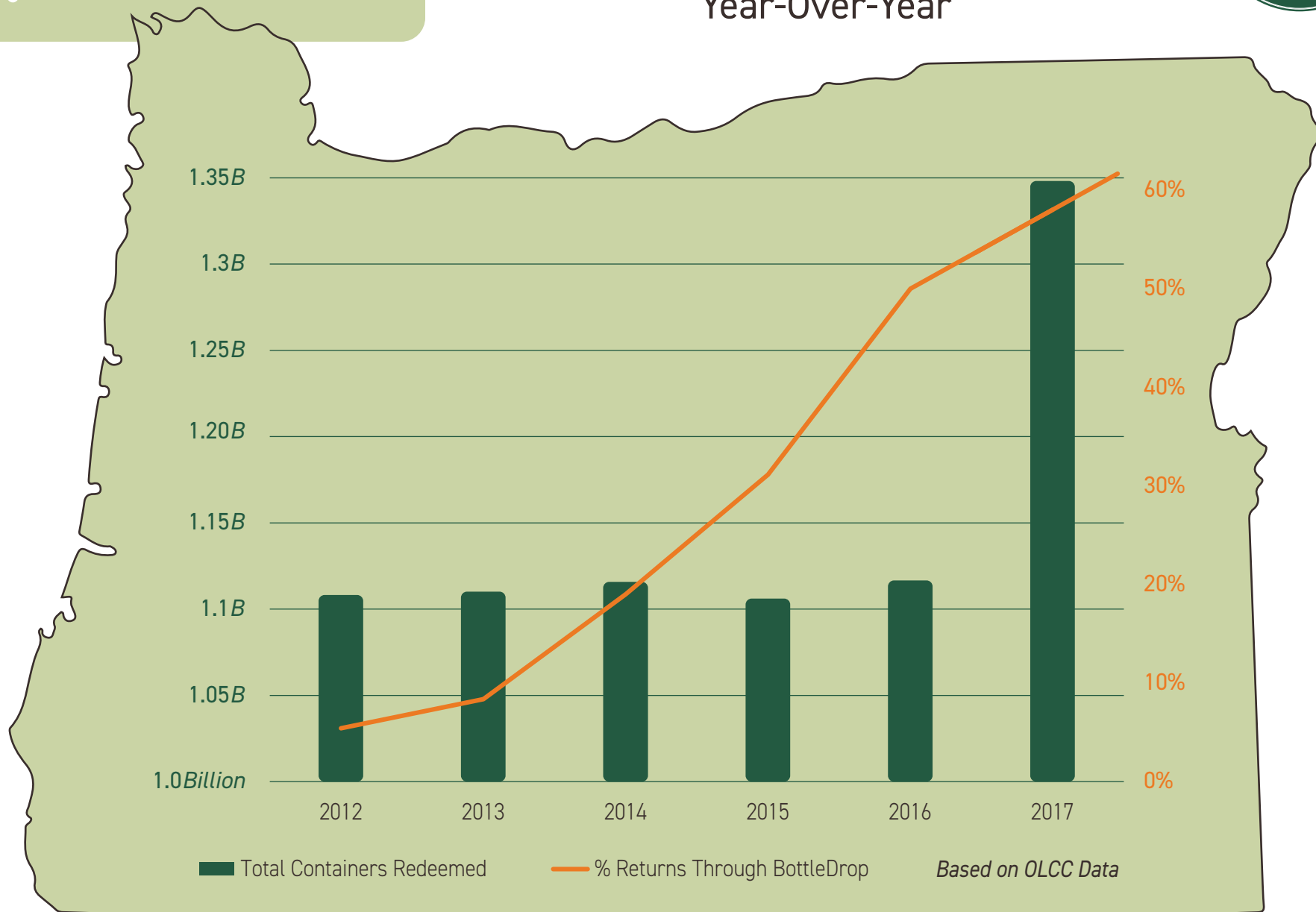
Redemption by Volume - Heat Map



# Quarterly REPORT



## Container Return Volume Year-Over-Year





## BottleDrop Accounts

*We processed ~14,000 green bags daily*

Q4 New Accounts	18,863
Bend	1,059
Eugene	4,149
Hermiston	776
Medford	1,739
Portland	11,140
Total BottleDrop Accounts	305,340





## BottleDrop Give

Fundraisers Registered	1440
Total BottleDrop Give Accounts	1244
Q4 New Give Accounts	181
Total Raised in Q4	\$397,905

### ***HOLIDAY GIVE: Doing Twice the Good and Giving Twice the Cheer***

Holiday Give is a program designed to help our registered nonprofits to make the most of their fundraising efforts. OBRC offered up to a 40% match for funds raised through blue bag returns. We're thrilled with the results. In the span of one month, 209 Give organizations raised \$71,350. OBRC matched \$14,600 and awarded an additional \$1,750 to three exceptionally creative fundraisers (pictured above).





## BottleDrop Refill

*Refillable Bottles. Reborn.*

Refill Bottles in Circulation	245,380
Producers Using Refill Bottles	4
Producers Committed to Refill Bottles	12
Statewide Refill Programs in US	1

### ***Reduce, REUSE, Recycle: Give Your Bottles Another Life***

BottleDrop Refill had nearly 250,000 bottles in circulation during Q4 and aims to surpass 1 Million in 2019 with more breweries and new types of beverage makers participating. Four producers used Refill Bottles in Q4, and BottleDrop Refill is targeting 20 producers in 2019. BottleDrop Refill is working to expand the network of Refill Bottle return points by growing the BottleBox program.



## BottleDrop Plastics

*ORPET Facility - St. Helen, OR*

Plastic Bottles Returned	79.1M
Lbs. of PET Flake Processed	6.6M
School Buses Equiv. in lbs.	221
Cubic Ft. of PET Flake	272,446
School Buses Equiv. in Cubic Ft.	85





**Questions? We're Here for You.**

**877 - 912 - 2019**

**[info@bottledropcenters.com](mailto:info@bottledropcenters.com)**