

Q3 - 2018

Measured in raw volume of containers, the third quarter of 2018 was by far the busiest three months in the history of Oregon's bottle return system. This was the first summer season with both the increased deposit value and the expanded class of containers. As a result, OBRC collected 45% more containers in Q3 2018 than in Q3 of 2017. During this period, OBRC collected over 500 million containers by picking up from, on average, 308 locations per day with a 99% on schedule pickup rate.

During our busy summer, we also attracted national acclaim for the launch of the BottleDrop Refill program, opened the 24th BottleDrop redemption center, added over 40,000 new BottleDrop account holders, and helped Oregon nonprofits raise over \$400,000 in revenue through BottleDrop Give.





Quarterly REPORT



OBRC Facts

Redeemables: Aluminum, Glass, Plastic

Containers Processed ~1.35B (2017)

Redemption Centers	24
--------------------	----

Reverse Vending Machines	267
--------------------------	-----

BottleDrop Express Sites	16
--------------------------	----

Express Sites In Development	5
------------------------------	---

Retail Drop Sites Served	2263
--------------------------	------

Reverse Vending Machines	445
--------------------------	-----

Employees in Oregon	479
---------------------	-----

Members & Participants	150
------------------------	-----

Processing Plants	5
-------------------	---

Portland, Eugene, Hermiston, Medford, Redmond	
--	--

Annual Operating Budget	~\$34M
-------------------------	--------

OBRC is a not-for profit that does not receive funding from the State of Oregon and uses ZERO (\$0) Oregon taxpayer dollars.





Quarterly REPORT

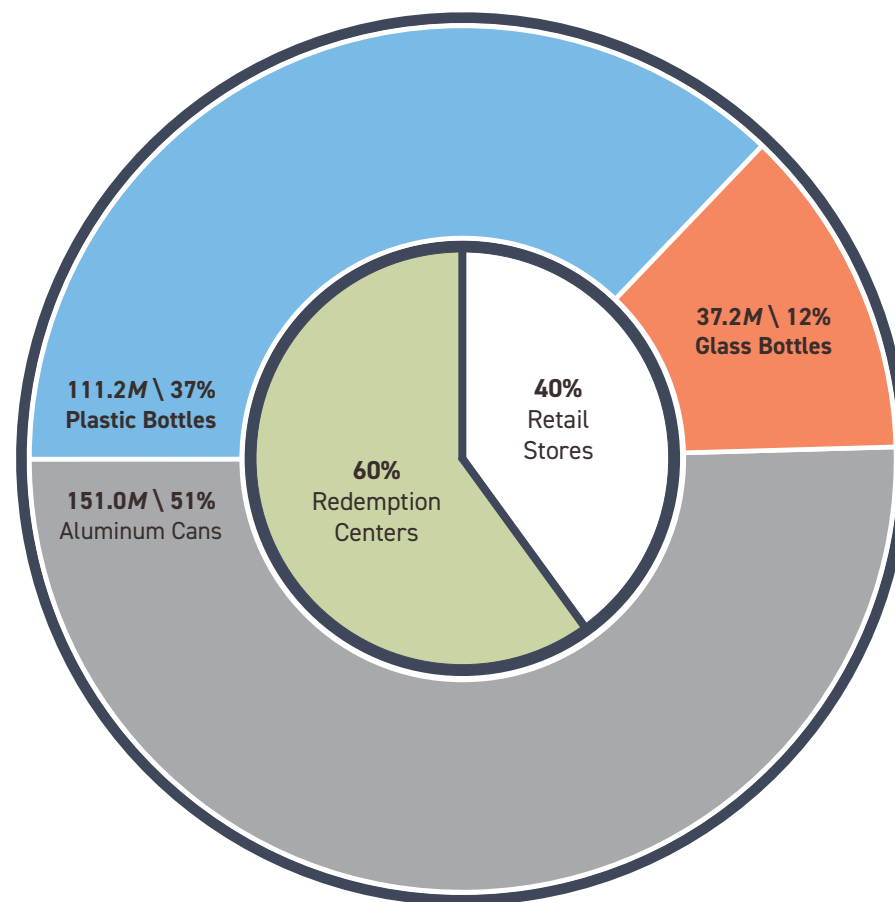


BottleDrop Center Returns

Containers Redeemed Q3	299.5M
Redeemed per Hour Open	302,478
Redeemed per Day	3.3M
Redeemed per Resident Q3	70
Containers Redeemed 2017	1.35B
Total Redemption Rate 2017	82%

In Q3 2018, 70 containers were returned per Oregon resident.

Return Volume by Container Type (Q3) + Return Location (2017)

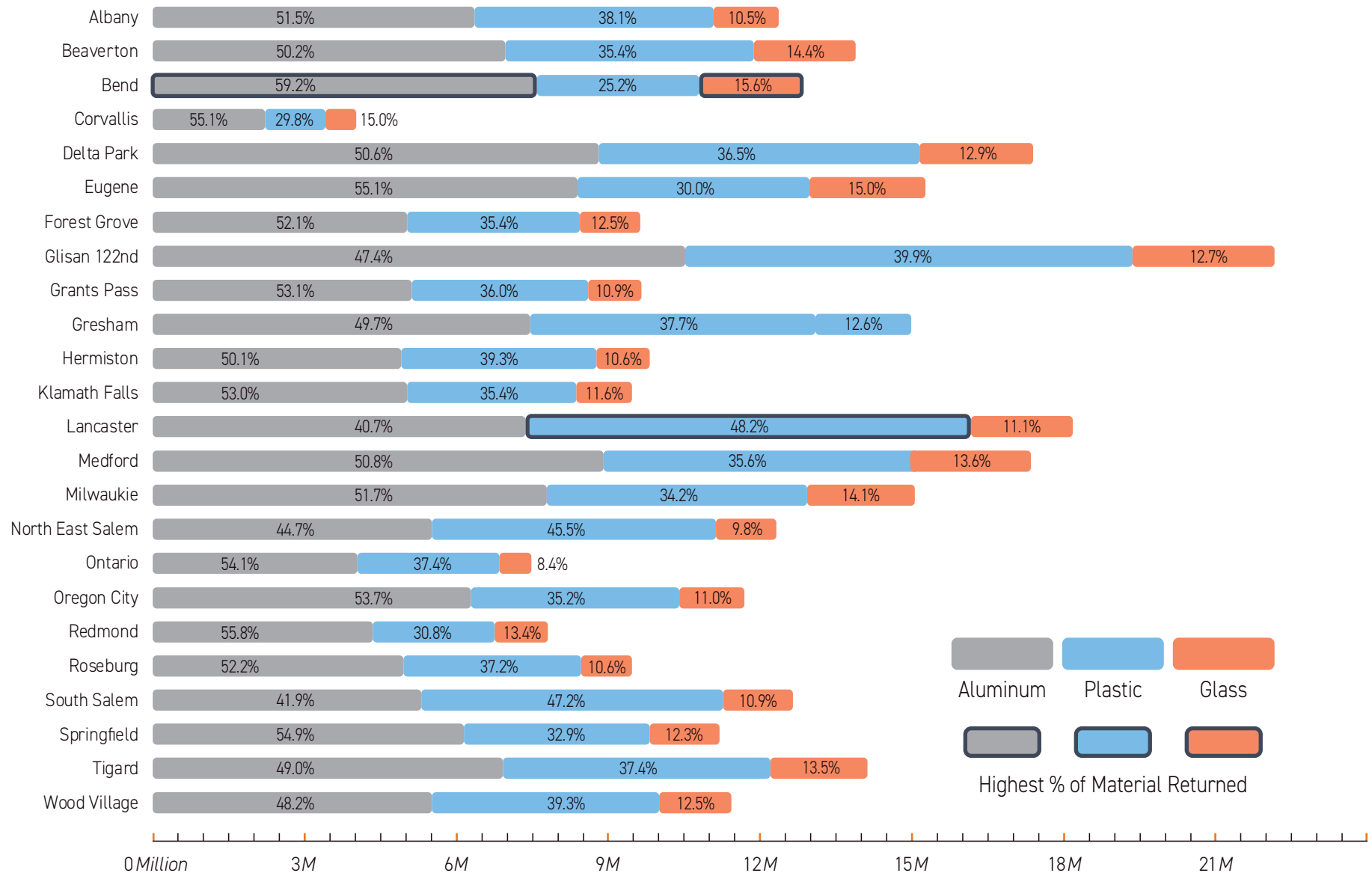




Quarterly REPORT

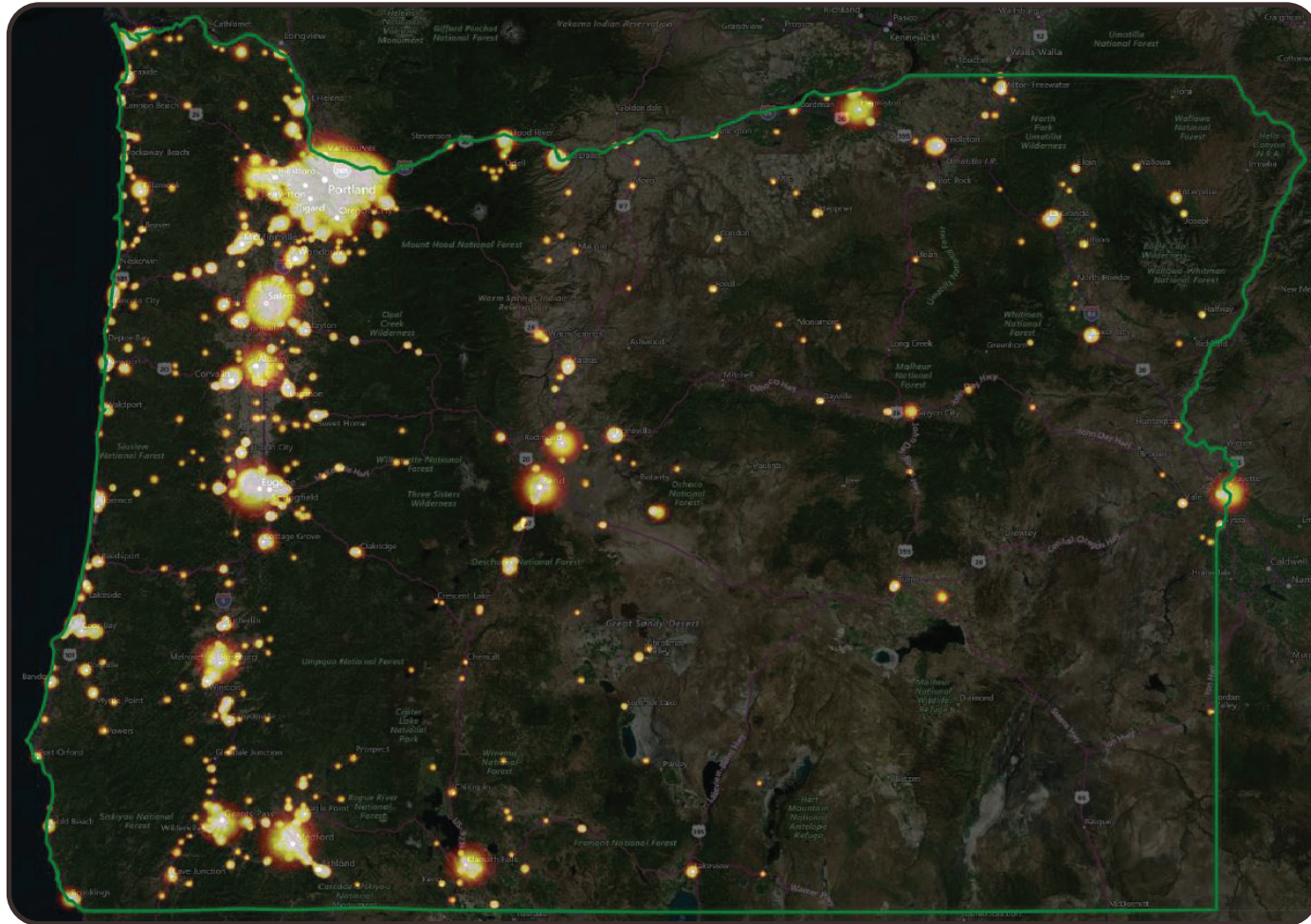


Return Volume by Redemption Center + Material





Quarterly REPORT



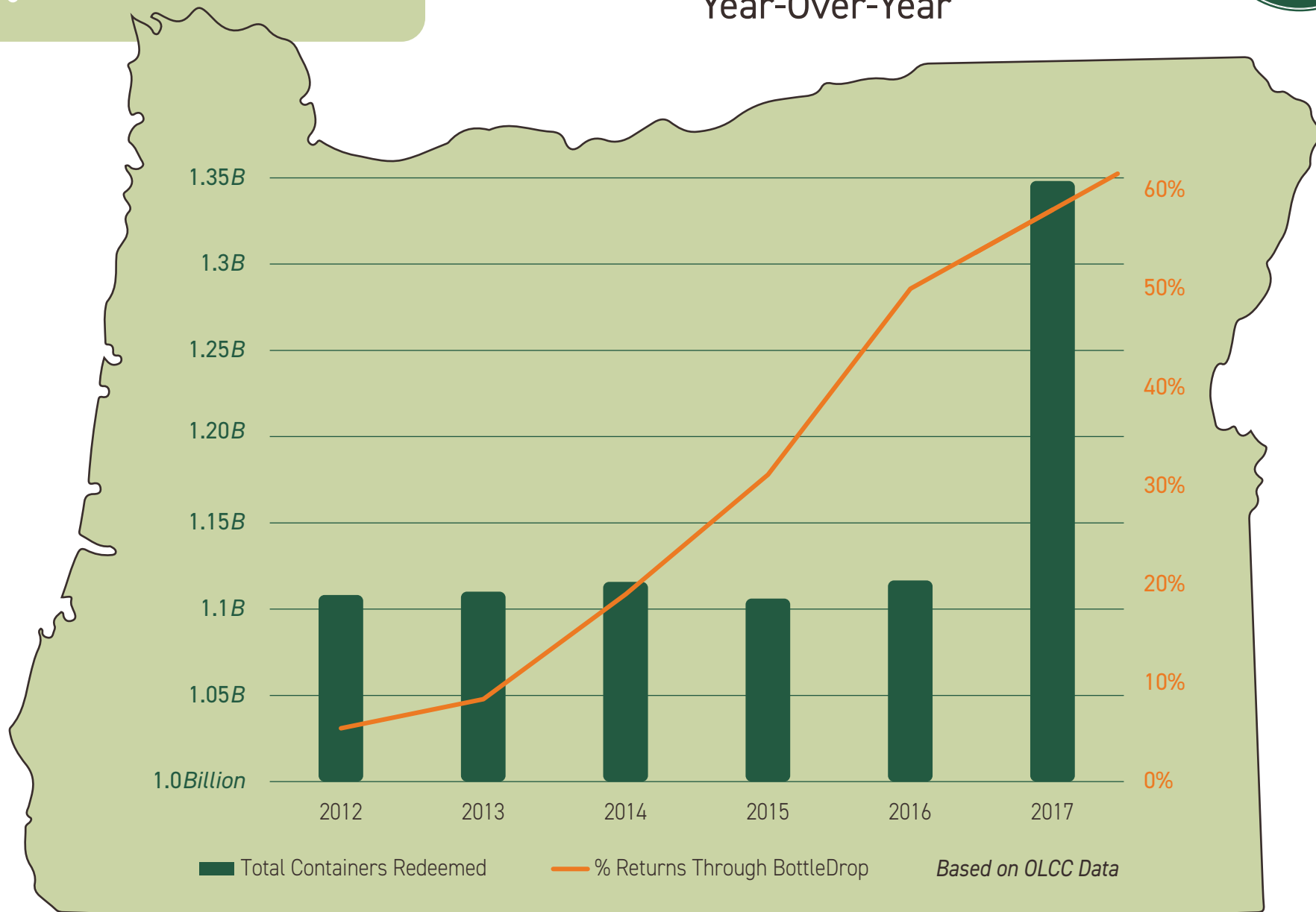
Redemption by Volume - Heat Map



Quarterly REPORT



Container Return Volume Year-Over-Year





BottleDrop Accounts

We processed ~14,000 green bags daily

Q3 New Accounts	42,542
Bend	2,397
Eugene	7,766
Hermiston	2,102
Medford	3,710
Portland	26,319
Total BottleDrop Accounts	288,756





BottleDrop Give

Fundraisers Registered	1168
Total BottleDrop Give Accounts	1057
Q3 New Give Accounts	203
Total Raised in Q3	\$403,280

FEATURED FUNDRAISER: Agape House - Hermiston, OR

The Agape House has been serving Hermiston for 33-years by providing food and clothing, and they serve over 4,000 people each month. Together, in July, we raised \$2,600 to help further the great work they are doing for kids, families, and the community.



Refillable Bottles. Reborn.

With Refill fully underway, Q3 was electric. July saw the first 12oz bottles filled, and both 12oz and 500ml refillable bottles reached beer aisles across Oregon in August, which got press from local, national, and international outlets.

BottleDrop Refill

Refillable Bottles. Reborn.

Participating Breweries	8
Refill Bottles Returned	7102
Statewide Refill Programs in US	1





BottleDrop®
PLASTICS



BottleDrop Plastics

ORPET Facility - St. Helen, OR

Plastic Bottles Returned	111.2M
Lbs. of PET Flake Processed	8.0M
School Buses Equiv. in lbs.	267
Cubic Ft. of PET Flake	330,657
School Buses Equiv. in Cubic Ft.	103





Quarterly REPORT



Questions? We're Here for You.

877 - 912 - 2019

info@bottledropcenters.com