



## Quarterly REPORT



### Q2 - 2018

Q2 saw the continued impact of the expansion of the Bottle Bill from January 1, 2018. Many products in the expansion are most heavily consumed in summer, and the increasing volume in Q2 begins to reflect that. Interest in the BottleDrop Give program grew dramatically with over 25% growth in the number of participating non-profit fundraisers. Also, Q2 saw the launch of our first-in-the-nation statewide refillable beer bottle program, with the first pallet of bottles delivered to Widmer Brothers Brewing. Look for much more refill activity in coming reports!

Opened our 23rd  
Redemption  
Center in Springfield





# Quarterly REPORT



## OBRC Facts

*Redeemables: Aluminum, Glass, Plastic*

Containers Processed ~1.35B (2017)

Redemption Centers	23
--------------------	----

Reverse Vending Machines	264
--------------------------	-----

BottleDrop Express Sites	15
--------------------------	----

Express Sites In Development	4
------------------------------	---

Retail Drop Sites Served	2238
--------------------------	------

Reverse Vending Machines	473
--------------------------	-----

Employees in Oregon	407
---------------------	-----

Members & Participants	86
------------------------	----

Processing Plants	5
-------------------	---

Portland, Eugene, Hermiston,  
Medford, Redmond

Annual Operating Budget	~\$34M
-------------------------	--------

OBRC is a not-for profit that does not receive funding from the State of Oregon and uses ZERO (\$0) Oregon taxpayer dollars.

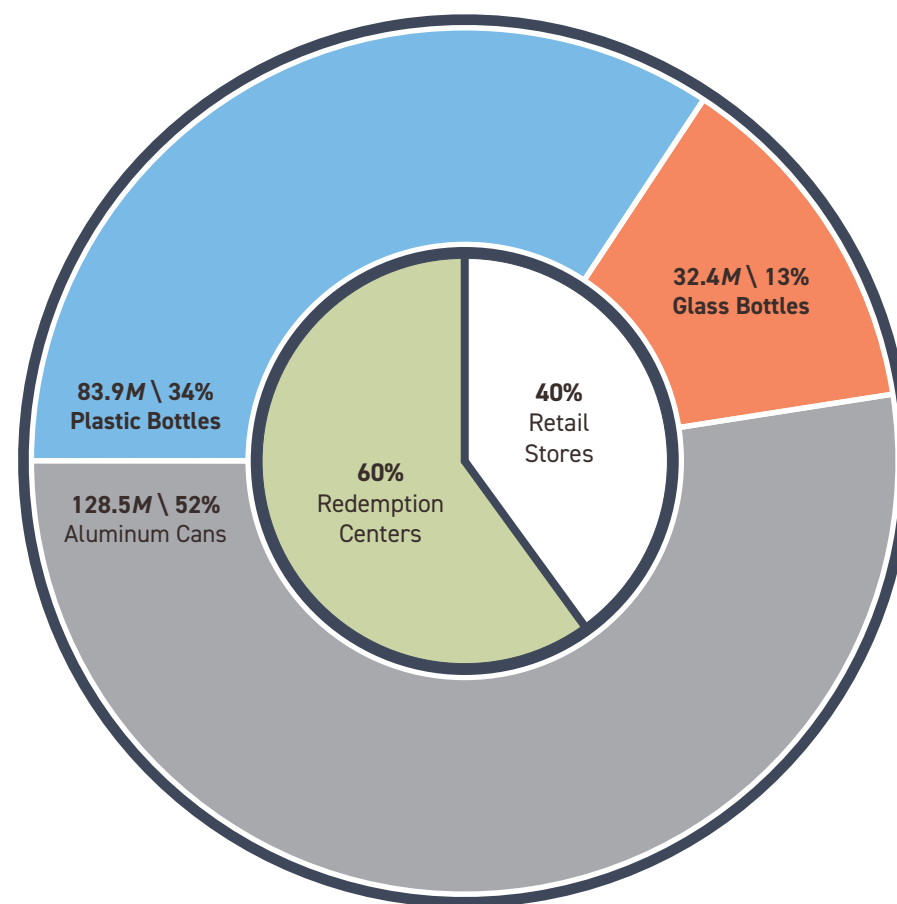


## BottleDrop Center Returns

Containers Redeemed Q2	244.8M
Redeemed per Hour Open	272,027
Redeemed per Day	2.7M
Redeemed per Resident Q2	58
Containers Redeemed 2017	1.35B
Total Redemption Rate 2017	82%

**In Q2 2018, 58 containers were returned per Oregon resident.**

## Return Volume by Container Type (Q2) + Return Location (2017)

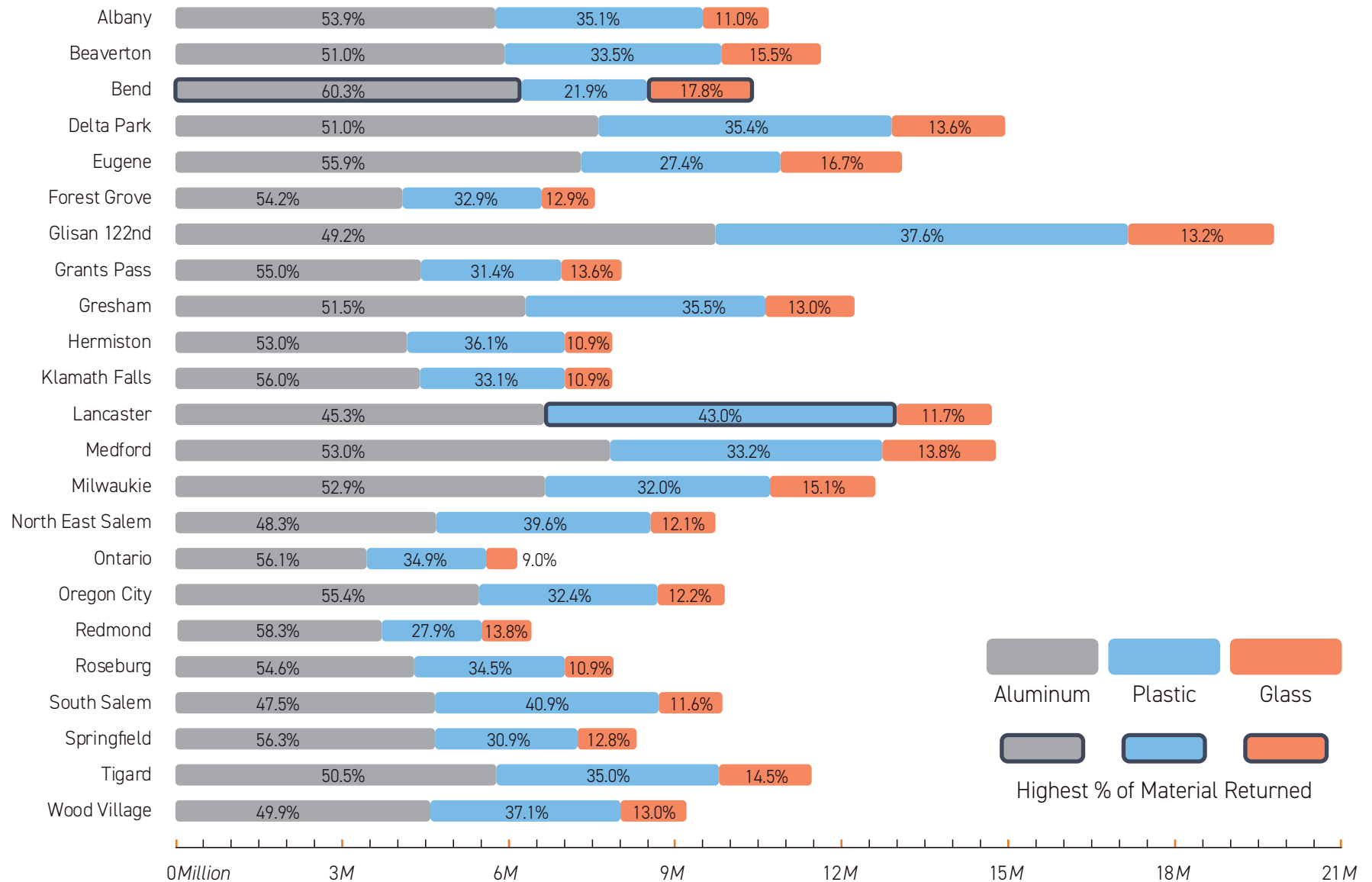




# Quarterly REPORT



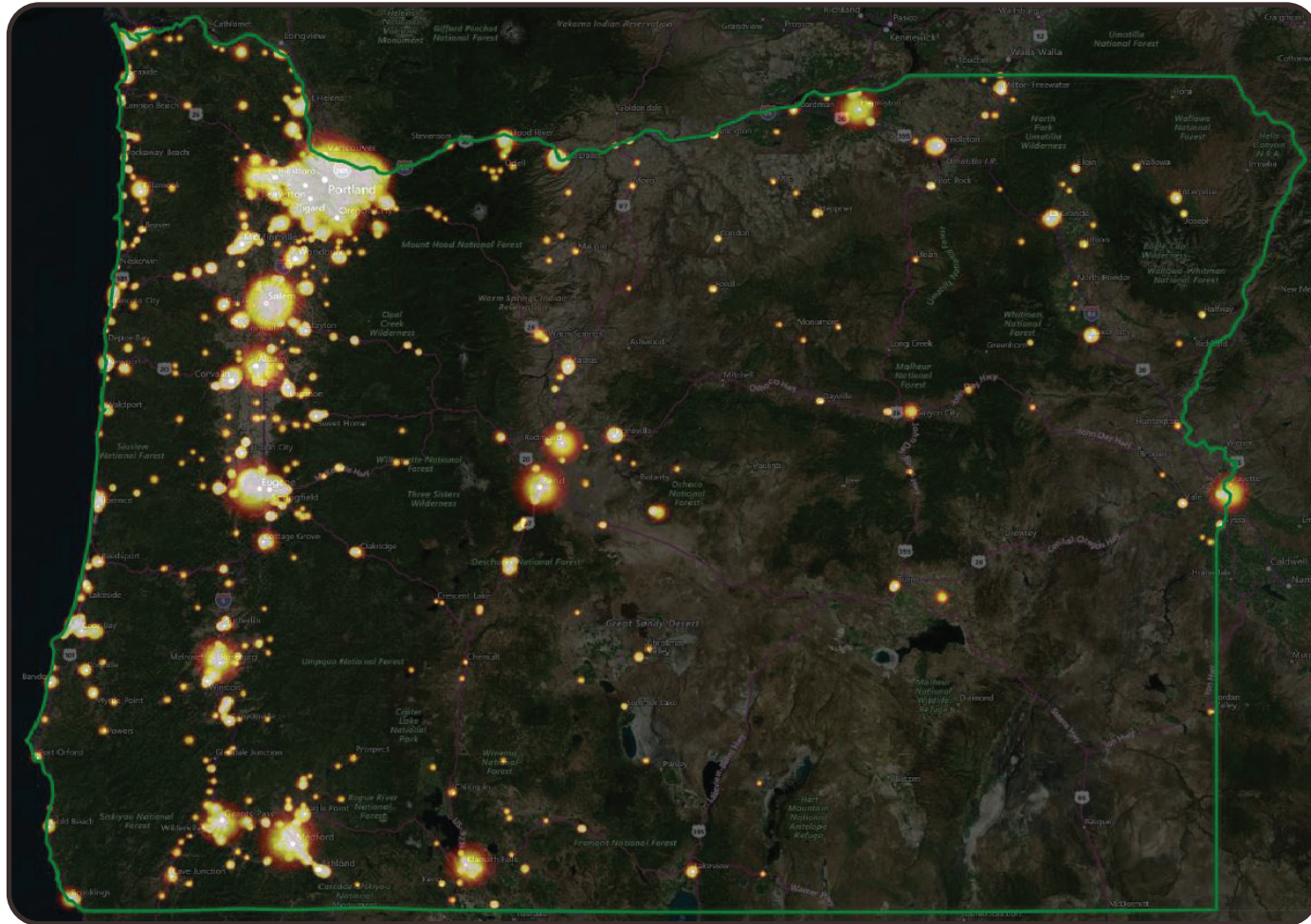
## Return Volume by Redemption Center + Material







# Quarterly REPORT



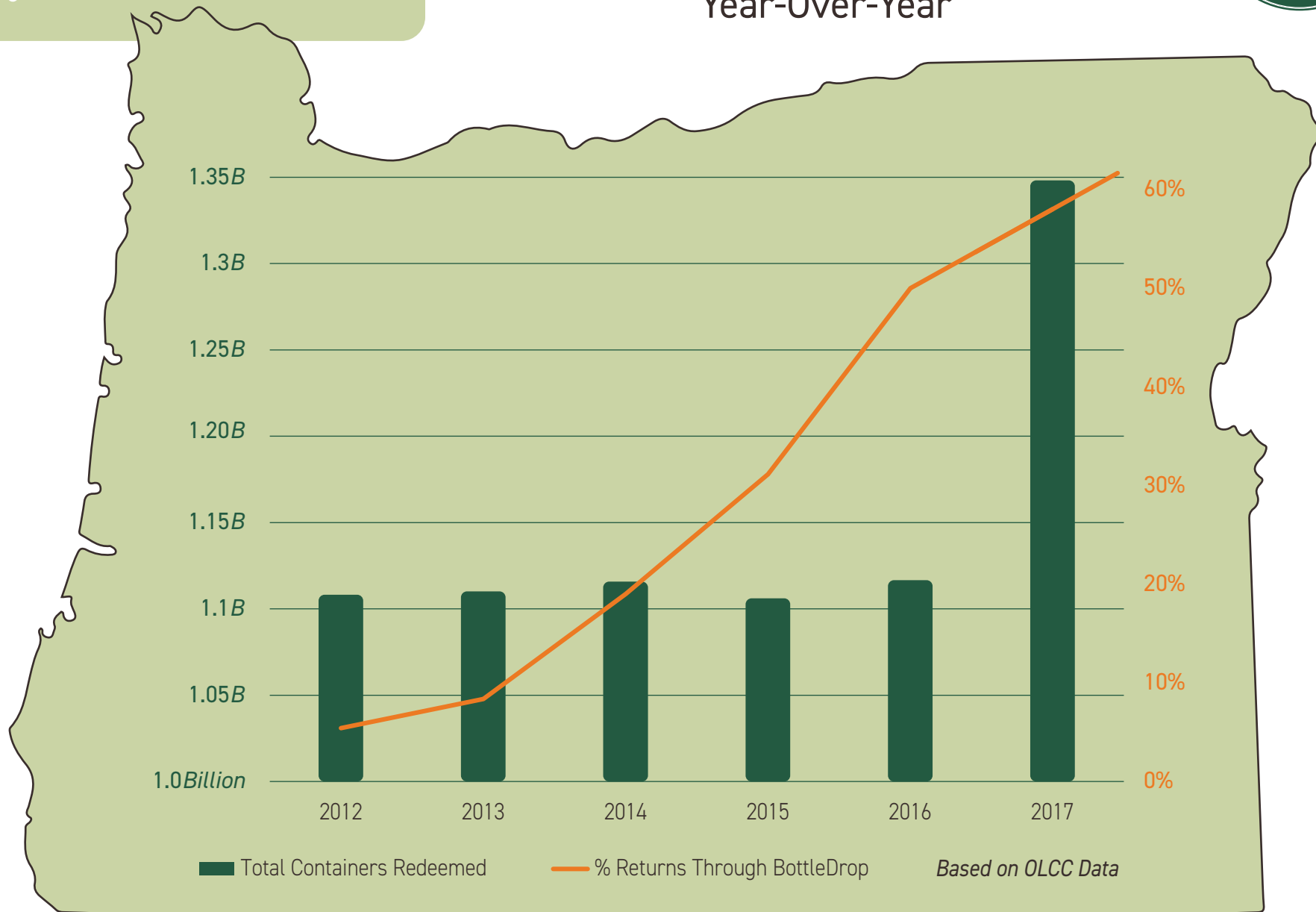
Redemption by Volume - Heat Map



# Quarterly REPORT



## Container Return Volume Year-Over-Year





**BottleDrop®**  
**CENTER**



## BottleDrop Accounts

*We process ~11,000 green bags daily*

Q2 New Accounts	25,347
Bend	1,498
Eugene	5,009
Hermiston	1,611
Medford	2,411
Portland	14,818
Total BottleDrop Accounts	243,023





## BottleDrop Give

Fundraisers Registered	1121
Total BottleDrop Give Accounts	904
Q2 New Give Accounts	197
Total Raised in Q2	\$395,350

### **FEATURED FUNDRAISER: Stearns Elementary Accessible Track & Field Project**

An invisible athletic barrier lies where the playground grass begins forcing some students to sit on the sidelines and watch as their classmates run and walk during school activities, including the Recess Running and Walk with a Hero programs.

Stearns Elementary is fundraising to build a 200m rubber track that will provide a safe and accessible space for everyone to actively pursue a brighter future together!





### **Refillable Bottles. Reborn.**

OBRC and Widmer Brothers Brewing collaborated to brew a Summer ale exclusively with Oregon ingredients and bottled in Oregon-made, refillable bottles to kickoff BottleDrop Refill on June 21, 2018. Cheers to a refillable future!

## **BottleDrop Refill**

*Refillable Bottles. Reborn.*

Participating Breweries	7
Refill Bottles Ordered	720
Statewide Refill Programs in US	1





## BottleDrop Plastics

*ORPET Facility - St. Helen, OR*

Plastic Bottles Returned	83.9M
Lbs. of PET Flake Processed	6.1M
School Buses Equiv. in lbs.	203
Cubic Ft. of PET Flake	249,551
School Buses Equiv. in Cubic Ft.	78





**Questions? We're Here for You.**

**877 - 912 - 2019**

**[info@bottledropcenters.com](mailto:info@bottledropcenters.com)**