



## Oregon Beverage Recycling Cooperative QUARTERLY REPORT

# Q1 2018



Q1 2018 was the first quarter of the new, expanded Bottle Bill, including juices, energy drinks, teas, and more. Many of the newly included containers are more frequently used in the summer months and do not yet show up in the Q1 data.



# Oregon Beverage Recycling Cooperative

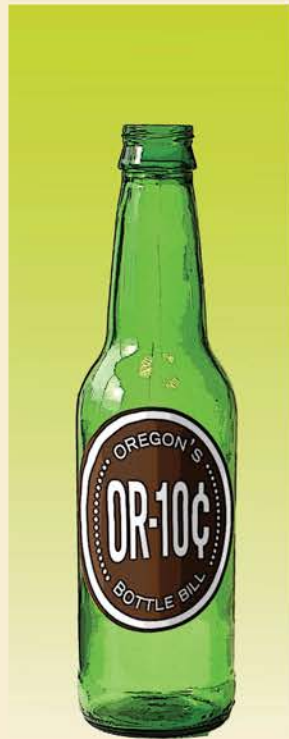
## Basic Facts:

- Processes ~1.35 billion containers/year (as of 2017)
- 108 members and participants (only distributors of beverages)
- 400 Oregon Employees
- 5 processing plants in Oregon
  - Portland, Eugene, Medford, Redmond, Hermiston
- Trucks collect empties from ~2,500 Oregon retail locations
- Annual operating budget of ~\$34 million dollars (2017)
- Partner in ORPET (St. Helens operation processing all Oregon PET)
- All with ZERO taxpayer dollars
- MORE INFO: [www.obrc.com](http://www.obrc.com) [www.bottledropcenters.com](http://www.bottledropcenters.com)



**1,348,170,791 total annual containers redeemed**

Initial estimates for 2017, prior to OLCC reporting



**191,632,888  
GLASS  
BOTTLES**



**682,907,573  
ALUMINUM  
CANS**



**361,900,818  
PLASTIC  
BOTTLES**

## Containers redeemed this quarter through BottleDrop by facility

Redemption Center	Glass Bottles	Aluminum Cans	Plastic Bottles	Totals
Albany Redemption Center	1,000,064	4,939,912	2,841,712	8,781,688
Beaverton Redemption Center	1,632,636	4,899,843	2,882,274	9,414,753
Bend Redemption Center	1,581,385	5,038,074	1,656,780	8,276,239
Delta Park Redemption Center	2,015,558	7,242,207	4,659,437	13,917,202
Eugene Redemption Center	2,097,503	7,205,732	3,373,896	12,677,131
Forest Grove Redemption Center	804,174	3,456,798	1,853,289	6,114,261
Glisan 122nd Redemption Center	2,537,985	8,868,843	6,436,514	17,843,342
Grants Pass Redemption Center	916,053	3,783,710	1,962,602	6,662,365
Gresham Redemption Center	1,374,078	5,515,080	3,395,702	10,284,860
Hermiston Redemption Center	666,607	3,304,569	2,000,811	5,971,987
Klamath Falls Redemption Center	747,940	3,736,311	1,975,268	6,459,519
Lancaster Redemption Center	1,486,973	5,918,750	4,197,600	11,603,323
Medford Redemption Center	1,748,618	6,687,743	3,795,536	12,231,897
Milwaukie Redemption Center	1,693,938	5,696,847	3,139,982	10,530,767
NE Salem Redemption Center	901,088	3,880,845	2,511,151	7,293,084
Ontario Redemption Center	536,531	2,834,375	1,628,132	4,999,038
Oregon City Redemption Center	1,147,174	4,838,959	2,421,413	8,407,546
Redmond Redemption Center	703,998	3,138,790	1,305,835	5,148,623
Roseburg Redemption Center	769,666	3,868,102	2,253,497	6,891,265
South Salem Redemption Center	1,000,524	4,079,115	2,386,307	7,465,946
Tigard Redemption Center	1,454,824	4,883,421	3,128,466	9,466,711
Wood Village Redemption Center	993,933	3,795,906	2,537,865	7,327,704
<b>Total</b>	<b>27,811,250</b>	<b>107,613,932</b>	<b>62,344,069</b>	<b>197,769,251</b>



The total weight of all containers processed this quarter equals

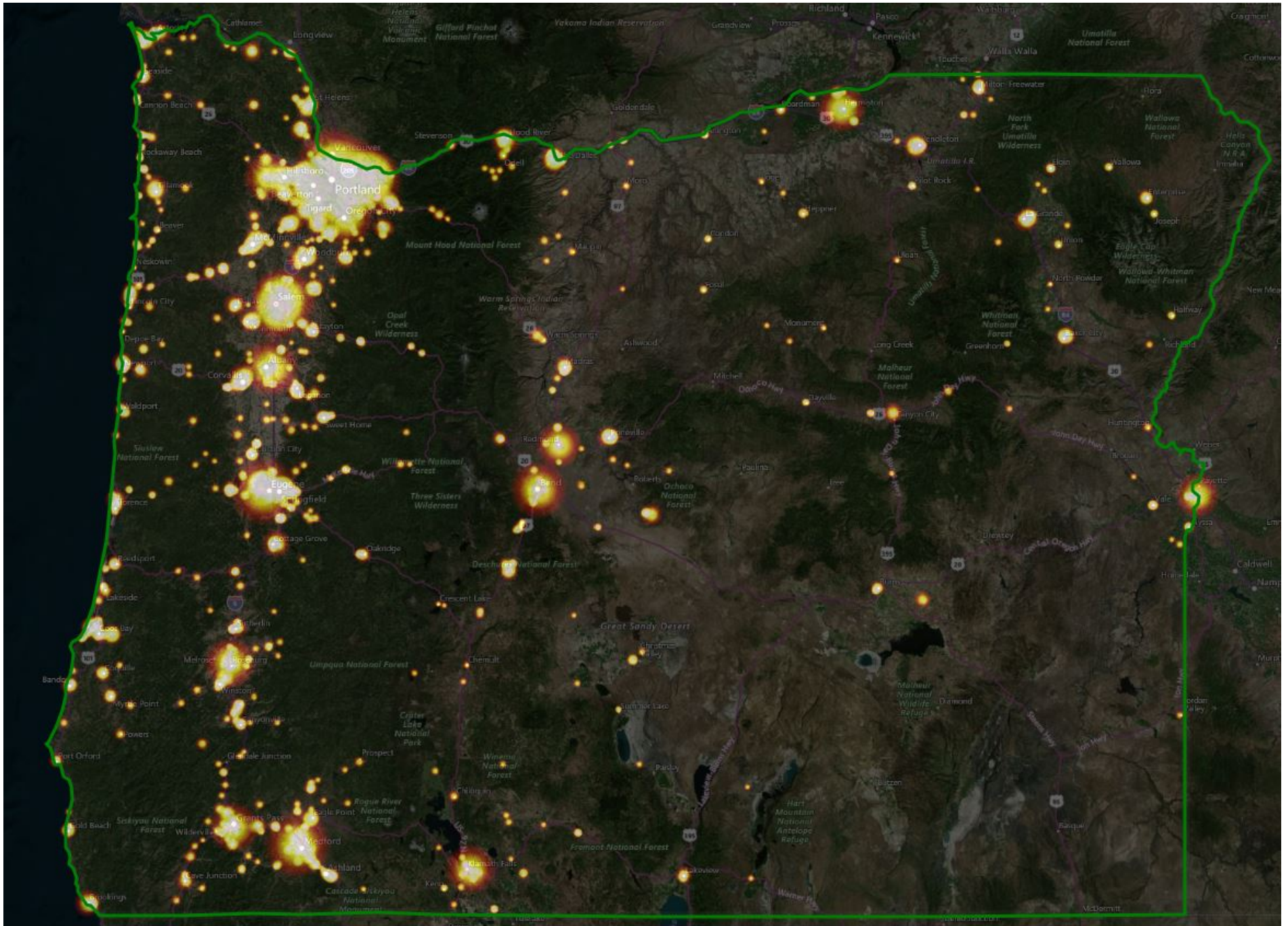
219

Gray whales!





## Heat map of redemption geographically in Oregon



**TOTAL NEW GREEN BAG  
ACCOUNT SIGN UPS:**

**21,655**



**TOTAL NEW GREEN BAG ACCOUNTS BY ZONE:**

**PORTLAND:**

**12,942**

**BEND:**

**1,177**

**EUGENE:**

**3,651**

**HERMISTON:**

**1,500**

**MEDFORD:**

**1,002**

# Redemption Locations by the Numbers

**Total stores**



**2,820**

**Stores with RVM  
bottle machines**



**267**

**12 new or upgraded  
RVM machines**

**BottleDrop  
Return Centers**



**23**

**3 under  
development**

**BottleDrop  
Express sites**



**12**

**10 under  
development**



#1 BottleDrop site by  
volume of containers : Glisan  
Q1 2018



Total redemption rate  
in Oregon:

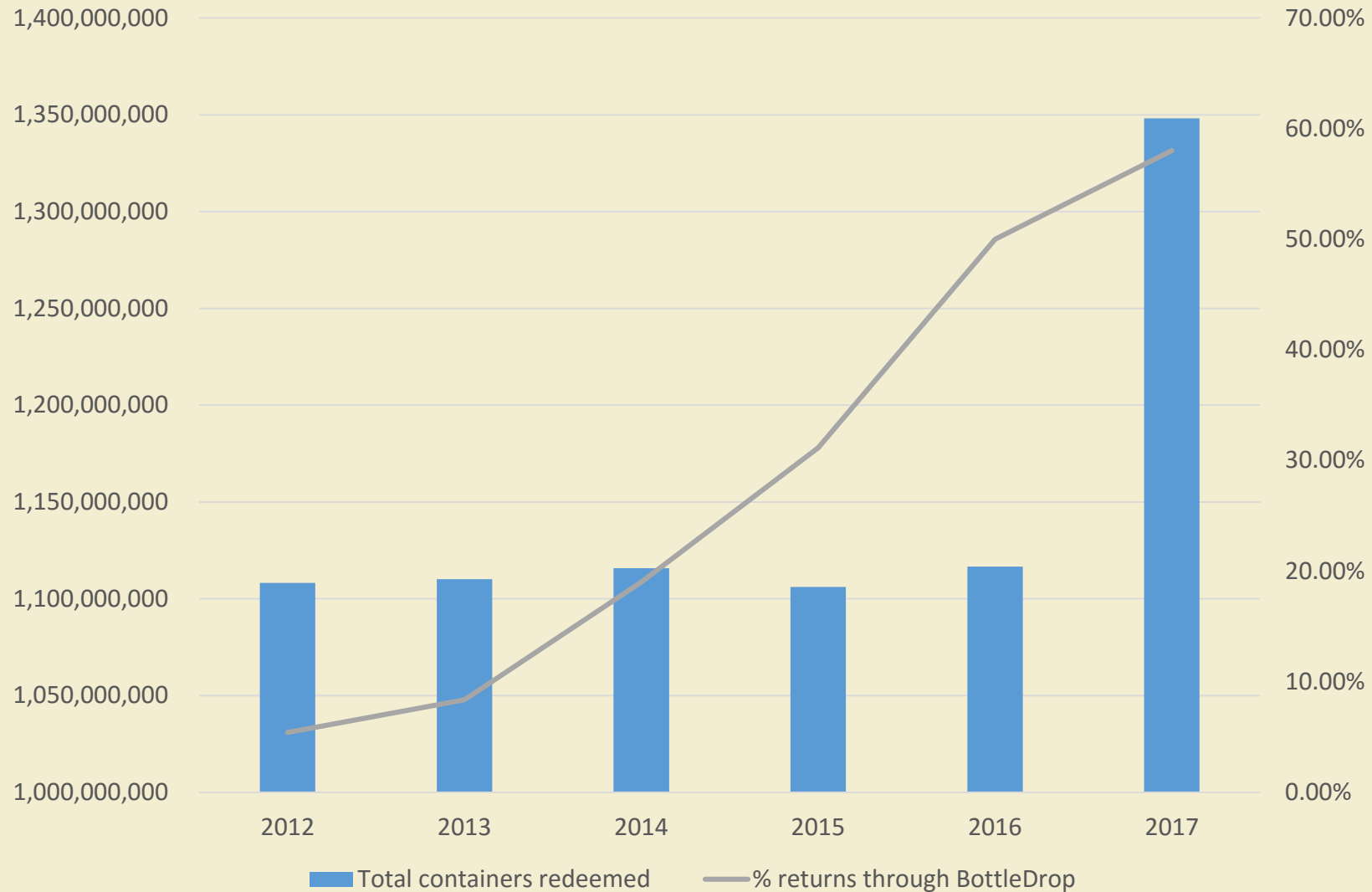
**82%\***

\*2017 rate post  
deposit increase



Owned and Operated by  
Oregon Beverage Distributors

## Container return volume over time



Based on OLCC data



**BottleDrop™**  
**GIVE**



Registered Fundraisers: **2,148**

Total Fundraiser  
Redemptions: **\$292,046**

Top Fundraiser: Dallas High School Turf Project

Top Blue Bag Fundraiser: Dallas HS Turf Project



**BottleDrop™**  
**REFILL**

No. of refillable  
bottles returned: **2112**

Still in initial  
pilot phase

No. of  
breweries  
participating in  
refillable beer  
bottle program: **7**







**Pounds of plastic PET flake produced through ORPET facility:**

**4,757,301 lbs.**



Oregon Beverage Recycling Cooperative  
*Est. 1971*