



Oregon Beverage Recycling Cooperative
QUARTERLY REPORT

Q4 2017



Q4 2017 saw a decrease in total redemption consistent with seasonal redemption patterns, but still much higher than previous years. Q4 also saw our largest expansion of green bag drop locations to date.



Oregon Beverage Recycling Cooperative

Basic Facts:

- Processes ~1.1 billion containers/year (as of 2016)
- 108 members and participants (only distributors of beverages)
- 400 Oregon Employees
- 5 processing plants in Oregon
 - Portland, Eugene, Medford, Redmond, Hermiston
- Trucks collect empties from ~2,500 Oregon retail locations
- Annual operating budget of ~\$34 million dollars (2016)
- Partner in ORPET (St. Helens operation processing all Oregon PET)
- All with ZERO taxpayer dollars
- MORE INFO: www.obrc.com www.bottledropcenters.com



1,116,659,884 total annual containers redeemed
(OBRC annual volumes as reported to OLCC)



188,966,82
GLASS
BOTTLES



628,290,705
ALUMINUM
CANS



299,402,355
PLASTIC
BOTTLES

Containers redeemed this quarter through BottleDrop by facility

Redemption Center	Glass Bottles	Aluminum Cans	Plastic Bottles	Totals
Albany Redemption Center	877,308	4,543,183	2,501,717	7,922,208
Beaverton Redemption Center	1,342,819	3,977,835	2,325,189	7,645,843
Bend Redemption Center	1,393,553	4,596,464	1,523,679	7,513,696
Delta Park Redemption Center	1,819,425	6,600,185	4,109,367	12,528,977
Eugene Redemption Center	1,983,897	6,520,290	3,059,541	11,563,728
Forest Grove Redemption Center	675,162	3,091,045	1,604,690	5,370,897
Glisan 122nd Redemption Center	2,309,429	8,222,182	5,837,178	16,368,789
Grants Pass Redemption Center	869,204	3,434,873	1,684,755	5,988,832
Gresham Redemption Center	1,276,065	4,873,993	2,914,707	9,064,765
Hermiston Redemption Center	496,695	2,560,133	1,573,833	4,630,661
Klamath Falls Redemption Center	753,309	3,731,635	1,830,468	6,315,412
Lancaster Redemption Center	1,423,889	5,702,321	3,941,613	11,067,823
Medford Redemption Center	1,592,926	6,173,872	3,351,522	11,118,320
Milwaukie Redemption Center	1,336,594	4,594,690	2,541,792	8,473,076
NE Salem Redemption Center	774,925	3,462,278	2,221,488	6,458,691
Ontario Redemption Center	470,173	2,568,039	1,446,625	4,484,837
Oregon City Redemption Center	897,313	4,296,860	2,171,882	7,366,055
Redmond Redemption Center	664,236	2,864,303	1,244,269	4,772,808
Roseburg Redemption Center	249,333	1,320,570	755,475	2,325,378
South Salem Redemption Center	910,844	3,782,181	2,188,105	6,881,130
Tigard Redemption Center	1,283,217	4,265,417	2,729,667	8,278,301
Total	24,209,649	94,459,727	53,732,288	172,401,664

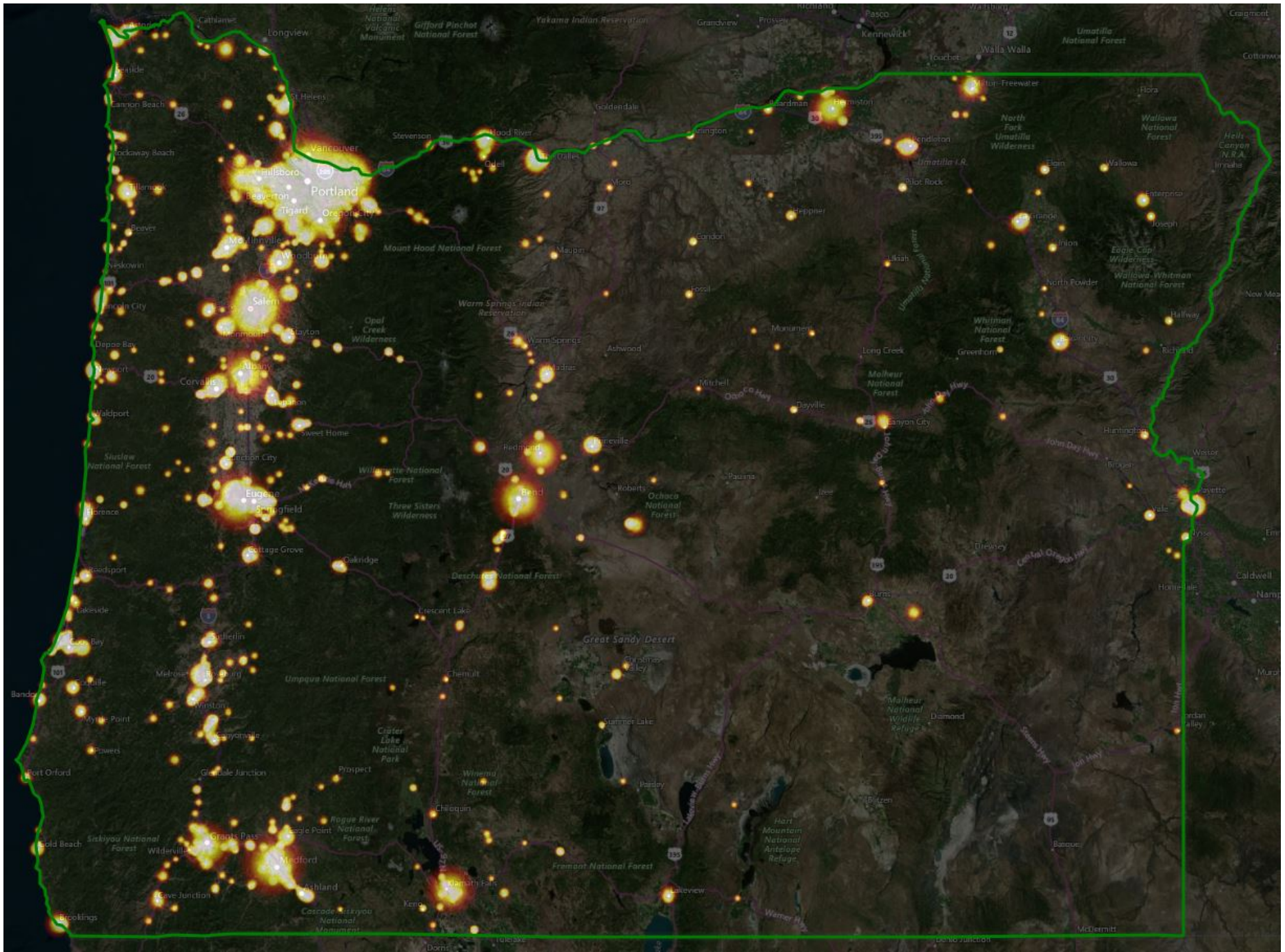
The total weight of all containers processed this quarter equals

191

Gray whales!



Heat map of redemption geographically in Oregon



**TOTAL NEW GREEN BAG
ACCOUNT SIGN UPS:**

19,420



TOTAL NEW GREEN BAG ACCOUNTS BY ZONE:

PORTLAND:

11,858

BEND:

1,107

EUGENE:

3,403

HERMISTON:

1,345

MEDFORD:

1,707

Redemption Locations by the Numbers

Total stores



2,549

**Stores with RVM
bottle machines**



272

**12 new or upgraded
RVM machines**

**BottleDrop
Return Centers**



21

**5 under
development**

**BottleDrop
Express sites**



11

**18 under
development**

#1 BottleDrop site by
volume of containers : Glisan
Q4 2017



Total redemption rate
in Oregon:

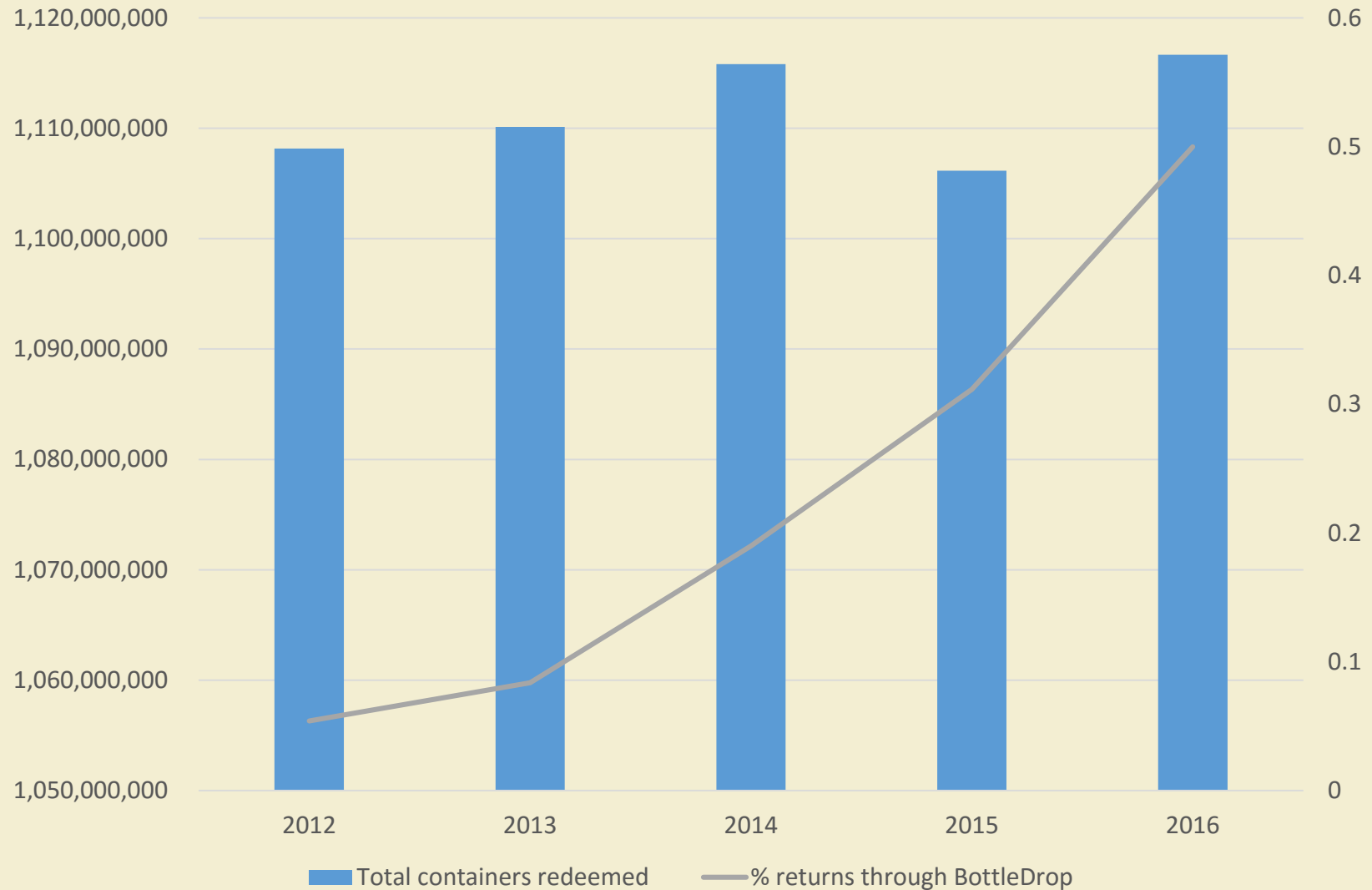
82%*

*average post
deposit increase



Owned and Operated by
Oregon Beverage Distributors

Container return volume over time



Based on OLCC data



BottleDrop™
GIVE



Registered Fundraisers: **1,910**

Total Fundraiser
Redemptions: **\$246,116**

Top Fundraiser: GAPS Swim Team

Top Blue Bag Fundraiser: Oregon City Parks Found.



BottleDrop™
REFILL

No. of refillable
bottles returned: **1584**

No. of
breweries
participating in
refillable beer
bottle program: **1**





Pounds of plastic PET flake produced through ORPET facility:

4,744,139 lbs.



Oregon Beverage Recycling Cooperative
Est. 1971