



Oregon Beverage Recycling Cooperative
QUARTERLY REPORT

Q3 2017



Q3 2017 continued to see strong growth in redemption. Green bag account signups continue to accelerate, and overall volume continues to grow. The increase in redemption from the deposit change seems to be tracking normal seasonal patterns.



Oregon Beverage Recycling Cooperative

Basic Facts:

- Processes ~1.1 billion containers/year (as of 2016)
- 86 members and participants (only distributors of beverages)
- 400 Oregon Employees
- 5 processing plants in Oregon
 - Portland, Eugene, Medford, Redmond, Hermiston
- Trucks collect empties from ~2,500 Oregon retail locations
- Annual operating budget of ~\$34 million dollars (2016)
- Partner in ORPET (St. Helens operation processing all Oregon PET)
- All with ZERO taxpayer dollars
- MORE INFO: www.obrc.com www.bottledropcenters.com



1,116,659,884 total annual containers redeemed
(OBRC annual volumes as reported to OLCC)



188,966,82
GLASS
BOTTLES



628,290,705
ALUMINUM
CANS



299,402,355
PLASTIC
BOTTLES

Containers redeemed this quarter through BottleDrop by facility

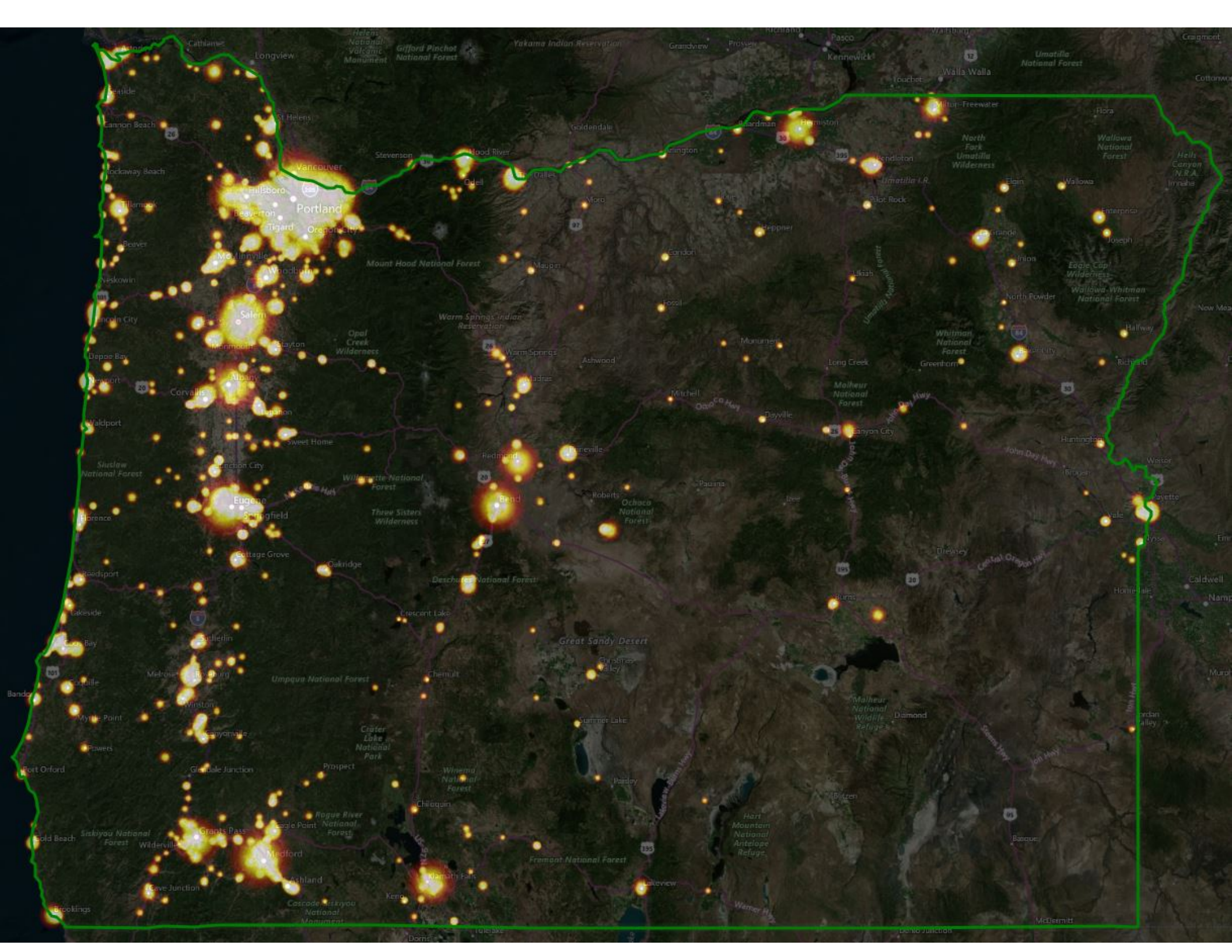
Redemption Center	Glass Bottles	Aluminum Cans	Plastic Bottles	Totals
Albany Redemption Center	1,102,109	5,531,219	3,277,700	9,911,028
Beaverton Redemption Center	1,514,547	4,314,155	2,733,246	8,561,948
Bend Redemption Center	1,780,042	5,768,445	2,297,617	9,846,104
Delta Park Redemption Center	2,488,503	8,429,897	5,452,924	16,371,324
Eugene Redemption Center	2,288,704	7,388,247	3,854,200	13,531,151
Forest Grove Redemption Center	849,012	3,548,295	2,042,520	6,439,827
Glisan 122nd Redemption Center	3,037,600	9,546,127	7,588,769	20,172,496
Grants Pass Redemption Center	1,110,011	4,220,053	2,378,271	7,708,335
Gresham Redemption Center	1,683,293	5,962,616	3,988,505	11,634,414
Hermiston Redemption Center	660,105	2,996,136	2,060,899	5,717,140
Klamath Falls Redemption Center	938,808	4,357,128	2,499,102	7,795,038
Lancaster Redemption Center	1,955,339	7,062,182	5,326,754	14,344,275
Medford Redemption Center	2,025,681	7,540,024	4,792,681	14,358,386
Milwaukie Redemption Center	1,635,694	5,197,633	3,260,176	10,093,503
North East Salem Redemption Center	1,003,970	3,874,876	2,672,239	7,551,085
Ontario Redemption Center	119,229	722,199	446,950	1,288,378
Oregon City Redemption Center	1,076,999	4,713,943	2,642,975	8,433,917
Redmond Redemption Center	875,196	3,553,614	1,707,708	6,136,518
South Salem Redemption Center	1,204,043	4,417,370	2,675,102	8,296,515
Tigard Redemption Center	1,682,435	5,144,537	3,594,738	10,421,710
Wood Village Redemption Center	1,117,891	4,277,819	3,118,599	8,514,309
Total	30,149,211	108,566,515	68,411,675	207,127,401

The total weight of all containers processed this quarter equals

234

Gray whales!





**TOTAL NEW GREEN BAG
ACCOUNT SIGN UPS:**

29,958



TOTAL NEW GREEN BAG ACCOUNTS BY ZONE:

PORTLAND:

20,937

BEND:

1,885

EUGENE:

2,579

HERMISTON:

1,473

MEDFORD:

3,084

Redemption Locations by the Numbers

Total stores



2,629

**Stores with RVM
bottle machines**



281

**5 new or upgraded
RVM machines**

**BottleDrop
Return Centers**



21

**5 under
development**

**BottleDrop
Express sites**



7

**10 under
development**

#1 BottleDrop site by
volume of containers : Glisan
Q3 2017



Total redemption rate
in Oregon:

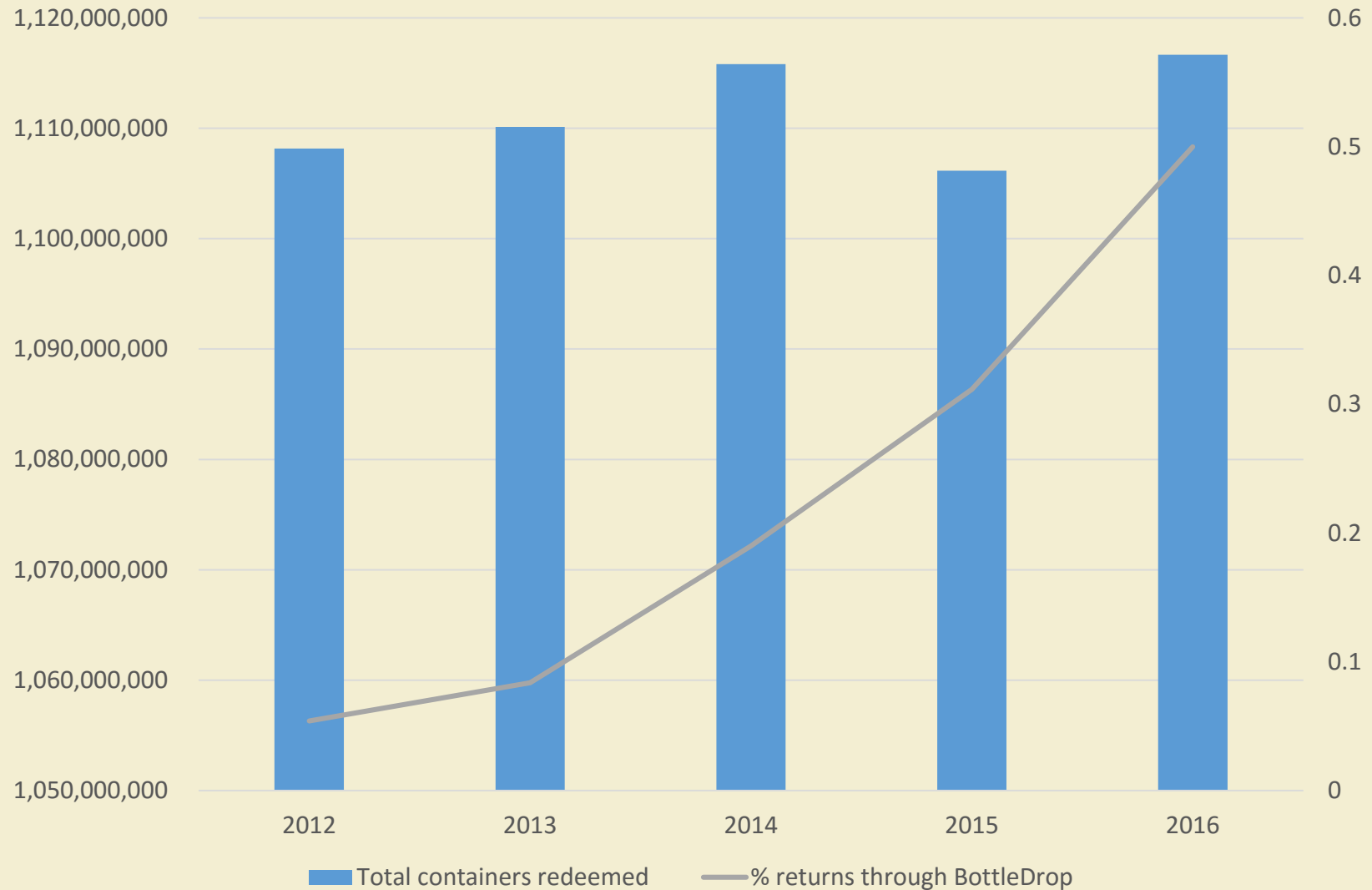
64%*

OLCC data as of
last report



Owned and Operated by
Oregon Beverage Distributors

Container return volume over time



Based on OLCC data



BottleDrop™
GIVE



Registered Fundraisers: **1,520**

Total Fundraiser
Redemptions: **\$355,254**

Top Fundraiser: Association of Oregon Recyclers

Top Blue Bag Fundraiser: Hermiston Band Boosters



BottleDrop™
REFILL

No. of refillable
bottles returned: **2712**

No. of
breweries
participating in
refillable beer
bottle program: **1**





Pounds of plastic PET flake produced through ORPET facility:

5,091,357 lbs.



Oregon Beverage Recycling Cooperative
Est. 1971